



## Stem Cell Qualified Products

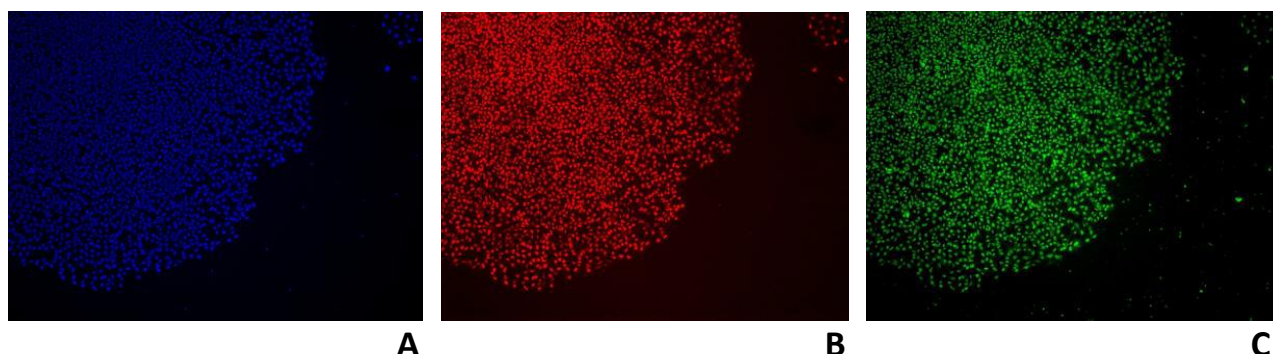
All Cultrex® Brand products are designed, developed and delivered by Trevigen, Inc.

Stem cell research requires the finest grade research reagents available. Trevigen's PathClear® designation indicates that the product has passed the most rigorous set of quality control criteria used by industry today, including MAP and PCR testing for mycoplasma, and 30 murine pathogens (including LDEV), or 19 human pathogenic viruses. Trevigen tests each production lot of material ensuring that the product you use in your research is the finest grade available today.

### Stem Cell Qualified Basement Membrane Matrix (BME) Products

Cultrex® Stem Cell Qualified BME has been shown to provide an effective feeder cell-free surface for the attachment and maintenance of human embryonic stem cells in a pluripotent state, thereby enabling its use for growth promotion or the study of stem cell differentiation.

Name	Catalog Number	Size
Cultrex® Stem Cell Qualified, BME Growth Factor Reduced, PathClear®	3434-001-02	1 ml
Cultrex® Stem Cell Qualified, BME Growth Factor Reduced, PathClear®	3434-005-02	5 ml



Above are examples of data using Trevigen's ECM Proteins, and Cultrex Stem Cell Qualified BME. Shown are H9 human embryonic stem cells after four passages in Cultrex Stem Cell Qualified BME. These cells maintain expression of the non-differentiated stem cell markers Oct-4 (B) and Nanog (C). Nuclear counterstain shown in (A) by DAPI staining. Images courtesy of the Yanik lab, MIT.

[www.rle.mit.edu/bbng](http://www.rle.mit.edu/bbng)

### Stem Cell Qualified ECM

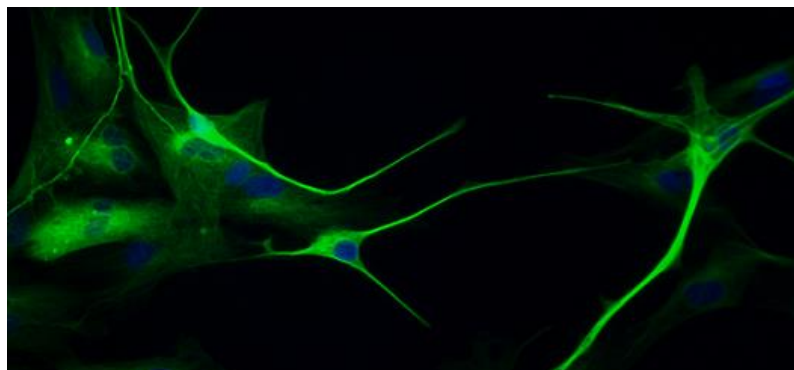
Our Stem Cell Qualified ECM Proteins provide a functionally defined and effective feeder cell-free surface for the attachment and maintenance of embryonic stem cells in a pluripotent state.

Name	Catalog Number	Size	Source
Cultrex® Stem Cell Qualified Laminin I, PathClear®	3400-010-03	1 mg	Murine Engelbreth-Holm-Swarm (EHS) tumor
Cultrex® Stem Cell Qualified Human Fibronectin, PathClear®	3420-001-03	1 mg	Human Plasma
Cultrex® Stem Cell Qualified Human Vitronectin, PathClear®	3421-001-03	200 µg	Human Plasma



# Trevigen®

Better Products. Better Results.



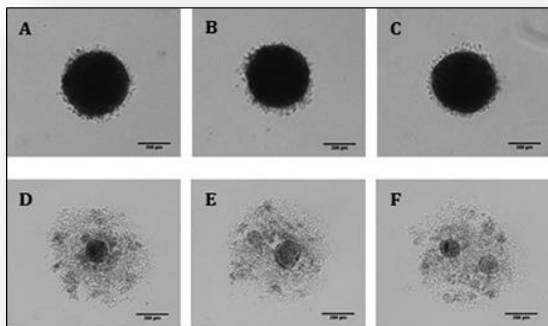
Human neuronal stem cells (hNSCs) cultured with Poly-Ornithine and Cultrex® Stem Cell Qualified Laminin-I and differentiated to neurons in NeuroCult™ NS-A Differentiation Medium for 18 days. Neurons were detected with anti-β tubulin III antibody (green), cell nucleus were detected with Hoechst 33342 (blue). Magnification: 20X

Other commonly used proteins in stem cell research are poly-l-lysine and poly-d-lysine. These highly positively charged amino acid chains are commonly used as a coating agent to promote cell adhesion in culture. This solution is provided ready to use at 0.01% and contains polymers in the 70,000 – 150,000 kDa range.

Name	Catalog Number	Size
Cultrex® Poly-L-Lysine	3438-100-01	100 ml
	3438-200-01	2 x 100 ml
Cultrex® Poly-D-Lysine	3439-100-01	100 ml
	3439-200-01	2 x 100 ml
Cultrex® Poly-L-Ornithine Solution	3436-100-01	100 ml

## Cultrex® Embryoid Body Formation Kit (3550-096-K)

Cultrex® Embryoid Body (EB) Formation Kit is a tool for generating **consistent, reproducible and identical in size embryoid bodies (EBs)**. It has been qualified to form EBs from human pluripotent stem cells (hESCs and iPSCs). The kit includes ROCK Inhibitor Y-27632, which significantly increases survival of PSCs in single cell culture, a specialized EB Formation Matrix to stimulate cell aggregation and development of EB, and a 96-well EB Formation Plate, that allows for control of the EB size and shape. No transfer step is required for formation and differentiation.



A, B, C - EBs formed from human iPSCs using Cultrex® Embryoid Body Formation Kit; shown EBs generated with 3,000 cells per well after 48 hours.

D, E, F - EBs formed from human iPSCs using conventional method; 3,000 cells per well after 48 hours.

Each image (A-F) represents individual well of 96-well plate.

## Trevigen, Inc.

8405 Helgerman Court, Gaithersburg, MD 20877 USA

Phone: 1-800-TREVIGEN (1-800-873-8443) • 301-216-2800 • Fax: 301-560-4973 • Email: [info@trevigen.com](mailto:info@trevigen.com) • <http://www.trevigen.com>

© 2017 Trevigen, Inc.. All rights reserved. Cultrex, Pathclear and Trevigen are registered trademarks of Trevigen, Inc.

