

CometChip[®] System



Trevigen[®]

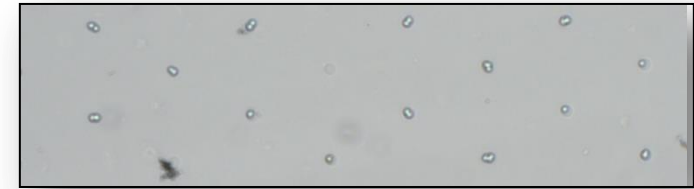
Better Products. Better Results.



CometChip[®]
Agarose array
30 μ pores

Step 1: Cell Loading
Add 10,000 cells per well
Cover wells with overlay
Place in TC incubator, 30 min
Aspirate excess cells
~ 400 micropores for each well

Step 2: Cell Treatment
Add DNA damaging agent to designated wells
Cover wells with overlay
Place in tissue culture incubator

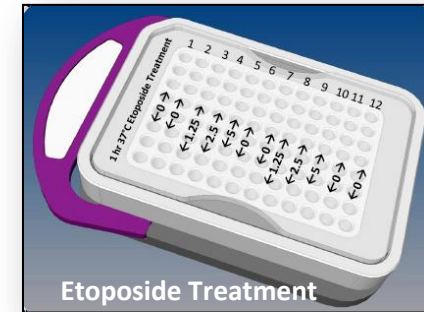


Bright field image: Cell loading into 30 μ pores

Macrowell former
Creates 96 separate wells by inserting CometChip[®] into magnetically sealable cassette



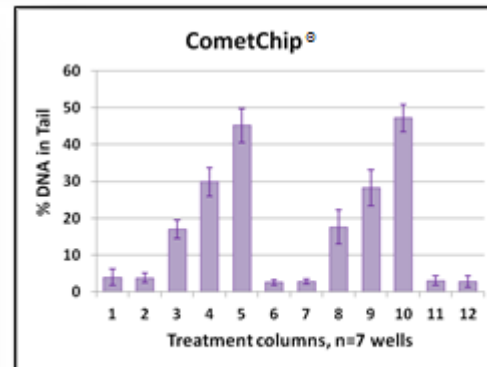
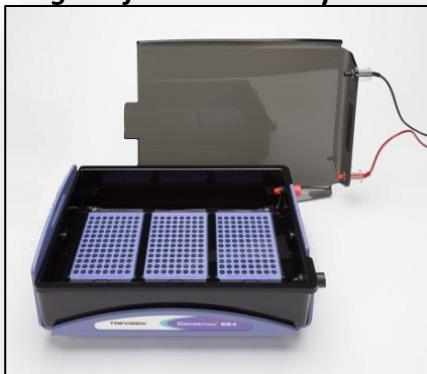
Step 3: Alkaline CometAssay
Remove CometChip[®] from Macrowell former
PBS rinse, overlay w/ LM Agarose
Immerse in Lysis Solution (1-24 hr, 4°C)
Perform Alkaline Unwinding (1 hr, 4°C)
Perform Alkaline Electrophoresis



Etoposide Treatment

Step 4: Fluorescent Detection
Analyze wet gels with Trevigen's Comet Assay Analysis Software

designed for CometAssay ES II



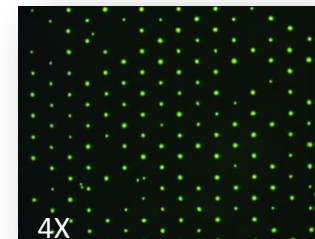
➤ No leakage between columns (wells)

8405 Helgerman Court, Gaithersburg, MD 20877

info@trevigen.com • 301-216-2800 • www.trevigen.com

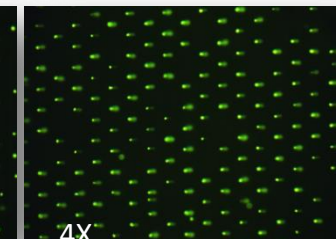
➤ Multiple treatments on single slide

Untreated



4X

5 μM Etoposide



4X

➤ No overlapping comets



Trevigen®

Better Products. Better Results.

**CometChip® Electrophoresis Starter Kit
with Power Supply for North America (4260-096-ESK-PS1)**

CometChip® Starter Kit (4260-096-CSK)

CometAssay® Electrophoresis System II (4250-050-ES)

Power supply (4250-050-PS1)

CometChip® Starter Kit (4260-096-CSK)

CometChip® Kit (4260-096-K)

96-Well CometChip® System (4260-096-CS)

CometChip® Kit (4260-096-K)

CometChip®, 30 micron (4260-096-01)

Lysis Solution (100 ml, 4250-010-01)

LM Agarose (15 ml, 4250-050-02)