

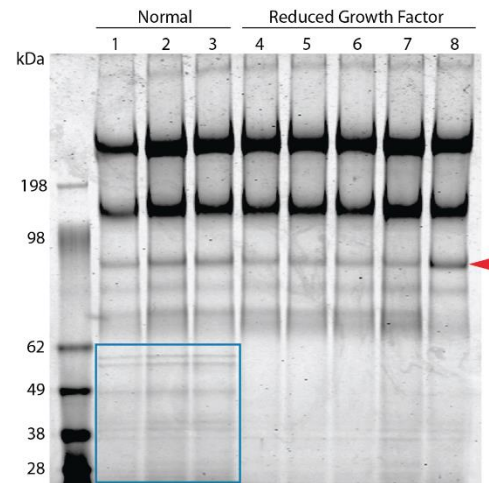


CULTREX[®] EXTRACELLULAR MATRIX AND PROTEINS

All Cultrex[®] brand products are designed, developed and delivered by Trevigen, Inc.

Cultrex[®] Basement Membrane Matrix (BME)

- Eight different formulations to meet evolving research needs and to match your cells microenvironment.
- Developed and manufactured to the highest standards in the industry.
- Lot-to-lot product consistency and comprehensive performance testing is second to none.
- All PathClear[®] products are MAP tested as raw materials and the final product is tested by PCR for mycoplasma and 30 other pathogens and viruses.
- The lowest level of endotoxins by competitive comparison (less than 8 EU.)
- All human derived materials are tested for pathogens including HIV 1, and 2 and Hepatitis A, B, C.



Cultrex BME SDS-PAGE. From left to right, (1) Cultrex BME, (2) Cultrex BME Type 2, (3) Cultrex BME Type 3, (4) Cultrex RGF BME, (5) Cultrex 3D Culture Matrix, (6) Cultrex Stem Cell Qualified BME, (7) Cultrex RGF BME Type 2, (8) Cultrex RGF BME Type R1. Growth factors (blue square) are absent in Reduced Growth Factor matrices (lanes 4-8). Cultrex BME Type R1 (lane 8) is rich in entactin (red arrow).

Cultrex [®] BME Selection Chart			
NAME	BUFFER	CONCENTRATION	RECOMMENDED APPLICATIONS
Cultrex [®] BME, Type 1	DMEM	12-18 mg/ml	General (2D Culture, 3D Culture, Attachment, Invasion, etc.)
Cultrex [®] Stem Cell Qualified BME	DMEM	12-18 mg/ml	Attachment and Maintenance of Stem Cells
Cultrex [®] 3D Culture Matrix [™] BME	DMEM	14-16 mg/ml	3D Culture
Cultrex [®] Organoid Qualified BME, Type 2	DMEM	12-18 mg/ml	Robust Organoid Culture
Cultrex [®] BME, Type 3	RPMI 1640	12-18 mg/ml	Xenograft/Tumorgraft
Cultrex [®] BME, Type R1	DMEM	16-22 mg/ml	Difficult to Grow Organoid Culture

All BME and ECM component products are functionally tested using cell types and protocols accepted by the research community as exhibiting the sensitivity and stringency to rigorously challenge the product. The Cultrex[®] product testing for function and sterility is performed for each lot of product manufactured.

Cultrex [®] BME Specifications										
NAME	Endotoxin	Sterility	Mycoplasma	PathClear	Tube	Stem Cell	3D Culture	Organoid	Tumor Growth	High Entactin
Type 1	●	●	●	●	●					
Stem Cell Qualified	●	●	●	●	●	●				
3D Culture Matrix	●	●	●	●	●		●			
Type 2	●	●	●	●	●			●		
Type 3	●	●	●	●					●	
Type R1	●	●	●	●	●			●		●



Assay	Specification
Endotoxin	Endotoxin ≤ 8 EU/ml by LAL assay.
Sterility	No bacterial or fungal growth detected after incubation at 37°C for 14 days following USP XXIV Chapter 71 sterility test.
Mycoplasma	No mycoplasma contamination detected by PCR.
Pathclear [®]	Tested negative by PCR for 17 bacterial and virus strains typically included in mouse antibody production (MAP) testing, plus 13 additional murine infectious agents including LDEV, for a total of 31 organisms and viruses.
Tube	Promotes differentiation of human umbilical vein endothelial cells (HUVEC) into capillary-like structures.
Stem Cell	Attachment and maintenance of human iPSCs in a pluripotent state in a feeder-free culture.
3D Culture	Promotes differentiation of a human epithelial cell line derived from mammary gland (MCF-10A) and human prostate (PC-3) into acinar structures.
Organoid	Promotes growth and expansion of mouse small intestine organoid progenitor cells.
Tumor Growth	Supports proliferation and growth of breast cancer cells (MCF7) embedded in the matrix for minimum of 8 days.
Entactin	Entactin content ≥ 8% by SDS-PAGE.

Cultrex[®] Purified Extracellular Matrix Proteins

Cultrex[®] purified extracellular matrix (ECM) proteins provide a defined substrate for cell adhesion in culture. To accommodate a variety of different cell models, Trevigen has developed a full range of ECM component proteins including Laminin I, Collagen I, Collagen IV, Fibronectin, and Vitronectin. These include purified proteins that have been qualified for 3D or stem cell cultures, as well as poly-L-lysine, poly-D-lysine and poly-L-ornithine.

ORDERING INFORMATION:

Name	Size	Catalog #
Cultrex [®] Basement Membrane Matrix	1 ml	3432-001-01
	5 ml	3432-005-01
	2 x 5 ml	3432-010-01
Cultrex [®] Reduced Growth Factor Basement Membrane Matrix	1 ml	3433-001-01
	5 ml	3433-005-01
	2 x 5 ml	3433-010-01
Cultrex [®] Stem Cell Qualified, Reduced Growth Factor Basement Membrane Matrix	1 ml	3434-001-02
	5 ml	3434-005-02
Cultrex [®] 3D Basement Membrane Matrix, Reduced Growth Factor	1 ml	3445-001-01
	5 ml	3445-005-01
	2 x 5 ml	3445-010-01
Cultrex [®] Basement Membrane Matrix, Type 2	1 ml	3532-001-02
	5 ml	3532-005-02
	2 x 5 ml	3532-010-02
Cultrex [®] Reduced Growth Factor Basement Membrane Matrix, Type 2	1 ml	3533-001-02
	5 ml	3533-005-02
	2 x 5 ml	3533-010-02
Cultrex [®] Basement Membrane Matrix, Type 3	1 ml	3633-001-02
	5 ml	3633-005-02
	2 x 5 ml	3633-010-02
Cultrex [®] Reduced Growth Factor Basement Membrane Matrix, Type R1	1 ml	3433-001-R1
	5 ml	3433-005-R1
	2 x 5 ml	3433-010-R1

Name	Size	Catalog #
Cultrex [®] Laminin (mouse)	1 mg	3400-010-01
Cultrex [®] Laminin (mouse) (PC)	1 mg	3400-010-02
Cultrex [®] Stem Cell Qualified Laminin (mouse)	1 mg	3400-010-03
Cultrex [®] Collagen IV	1 mg	3410-010-01
Cultrex [®] Human Fibronectin, PathClear [®]	1 mg	3420-001-01
Cultrex [®] Stem Cell Qualified Human Fibronectin, PathClear [®]	1 mg	3420-001-03
Cultrex [®] Human Vitronectin, PathClear [®]	50 µg	3421-001-01
Cultrex [®] Stem Cell Qualified Human Vitronectin, PathClear [®]	200 µg	3421-001-03
Cultrex [®] Poly-L-Ornithine	100 ml	3436-100-01
Cultrex [®] Poly-D-Lysine	100 ml	3439-100-01
Cultrex [®] Poly-L-Lysine	100 ml	3438-100-01
Cultrex [®] Rat Collagen I (5 mg/ml)	1 ml	3440-005-01
	20 ml	3440-100-01
Cultrex [®] Bovine Collagen I (5 mg/ml)	1 ml	3442-005-01
	10 ml	3442-050-01
Cultrex [®] Rat Collagen I, Lower Viscosity (3 mg/ml)	35 ml	3443-100-01
	1 ml	3443-003-01
Cultrex [®] 3D Culture Matrix Laminin I	30 mg	3446-005-01
Cultrex [®] 3D Culture Matrix Rat Collagen I	20 ml	3447-020-01

Trevigen, Inc.

8405 Helgerman Court, Gaithersburg, MD 20877 USA

Phone: 1-800-TREVIGEN (1-800-873-8443) • 301-216-2800 • Fax: 301-560-4973 • Email: info@trevigen.com • <http://www.trevigen.com>